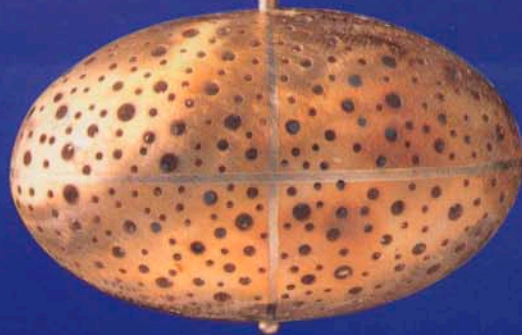
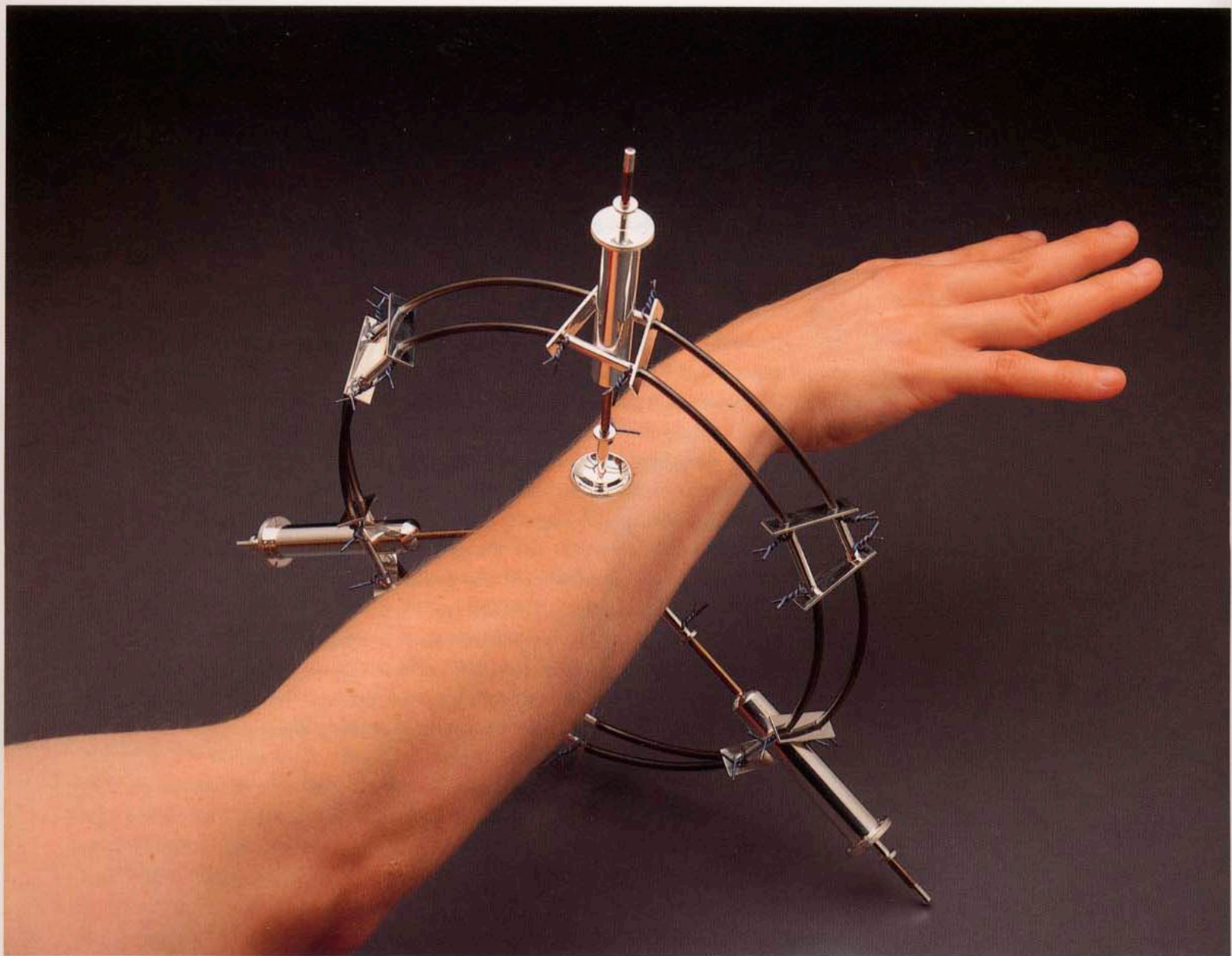


Susan Grant Lewin

# ONE OF A KIND



American Art Jewelry Today



Boris Bally. *Constrictor*. Arm form. 1990. Sterling silver, three rubies, oxidized brass, anodized titanium, stainless steel springs. Fabricated silver, tube settings, cold jointing, rivets, twist joints. 11 x 11 x 2", expanding to 12½ x 12½ x 2". Collection the artist. Photograph: David L. Smith

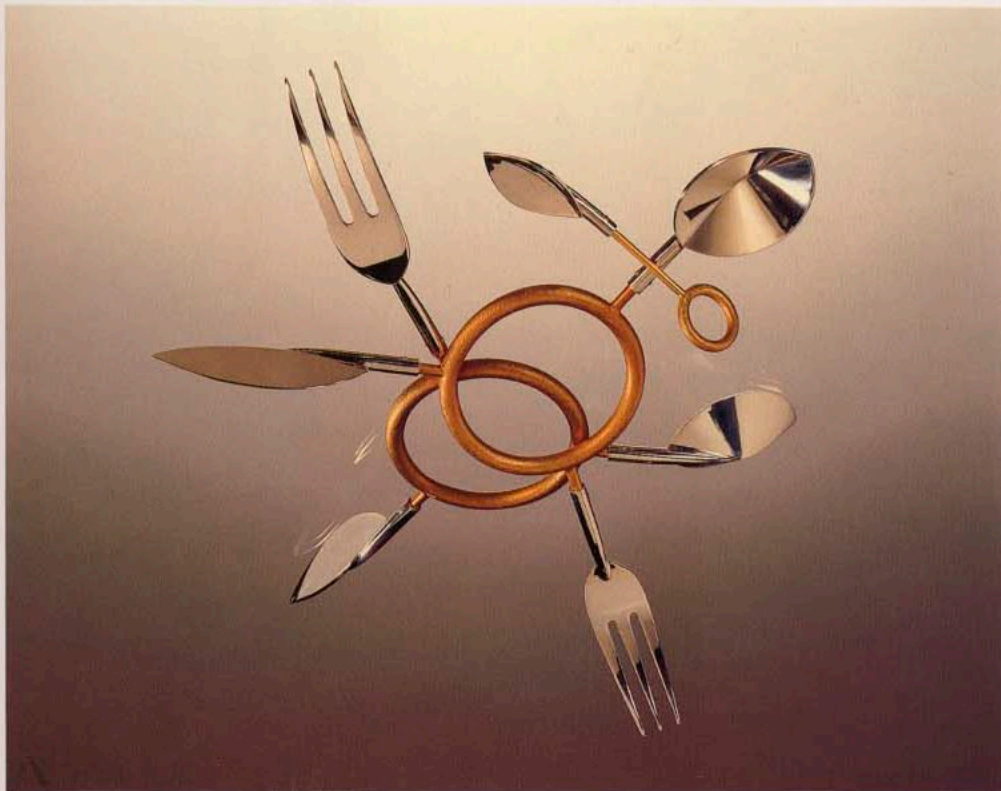
# Boris Bally

During his youth, Boris Bally was fascinated by weaponry and would draw and design weapons of his own. In later years, he went on to work in industrial design and model making. Machinery continues to inspire Bally's jewelry, and he still scrounges for inspiration in the scrap yards of Pittsburgh, where he finds discarded robotic parts from nearby Carnegie-Mellon Institute.

Bally has translated his interest in unfriendly machinery into engaging works that make intimate claims on the wearer. While their machinelike precision and clinical perfection give his works a dangerous and threatening edge, they draw the viewer in with intriguing construction and precious stones like rubies.

Bally's *Constrictor* is a perfect example of this mixed aesthetic. It is a tour de force of metal fabrication, combining sterling silver, rubies, brass, and titanium with springs, rivets, and tubes. The circular composition, nearly a foot in diameter, holds three syringe structures that press against the arm like the clamps of a delicate vise. The overall effect is similar to a medical contraption, setting the arm in traction and debilitating the wearer.

The look of high technology and feeling of entrapment offer a challenge for the wearer and viewer of Bally's works. As the artist states, "It takes more guts to put something of mine on." Not only are his large-scale pieces a challenge to wear, they also demand time and effort to put on, often requiring an assistant. By placing such demands on wearers, Bally's works help to invigorate their relationship with contemporary jewelry.



*opposite above:* Boris Bally. *Directional Triarcs*. Shirt form. 1990. Sterling silver, oxidized copper, brass pins, brass springs. Metal marriage with copper, fabricated silver, forge-printed, roll-printed. 3 x 10 x 1/4". Collection the artist. Photograph: David L. Smith

*opposite below:* Boris Bally. *Constrictor*. Arm form. 1990. Sterling silver, rubies, oxidized brass, anodized titanium, stainless steel springs. Fabricated silver, tube settings, cold jointing, rivets, twist joints. 2 x 11 x 11", expanding to 2 x 12 1/2 x 12 1/2". Collection the artist. Photograph: David L. Smith

*left:* Boris Bally. *Eat Wear*. Bracelets, ring, flatware. 1992. Gold-plated brass, sterling silver. Fabricated brass, file texture, cast and polished sterling silver, rivets. 10 1/2 x 11 x 1 1/2". Collection Arrowmont School of Crafts, Gatlinburg, and the artist. Photograph: Dean Powell

